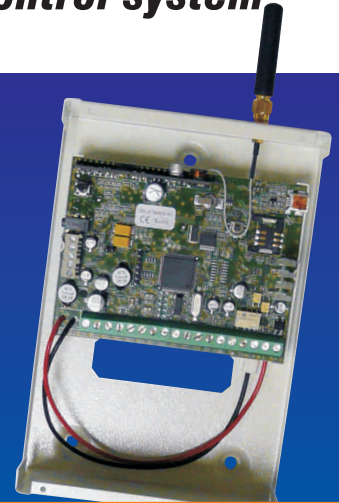


ZEUS4-VMC

GSM alarm communication control system

ZEUS4-VMC is the latest GSM communicator available. It combines functions of ZEUS4-MC and ZEUS4-VD GSM communicator. ZEUS4-VMC can be used as a backup for standard PSTN telephone line in the event of failure or as a replacement for standard telephone line when it is not possible to set it up. ZEUS4-VMC can pass on messages about intrusion alarms, technical alarms and other alarms to remote users using mobile voice and SMS autodialing system.

ZEUS4-VMC has 4 output trouble indications and 4 alarm inputs. Each alarm input, when alarm is triggered, sends a contact ID event, prerecorded voice and SMS messages separately or all at the same time to up to 10 different telephone numbers and 2 Central Monitoring Stations for Contact ID protocol. ZEUS4-VMC also gives an end-user the ability to control certain systems from distance by DTMF, SMS or Caller ID (CLIP) command.



Applications

- Security alarm systems
- Home care and Emergency alarm
- Fire systems
- Car and boat alarm transmitter
- Door entry
- Remote access control
- Temperature regulations
- Vending Machines
- Other remote controls

Features

- Built-in 3 or 4 band GSM module
- Full transparent event reporting through Contact ID protocol
- Contact ID protocol built-in
- Standard telephone line backup
- 4 alarm inputs
- GSM Priority input
- ON/OFF input
- 4 remotely controlled trouble status outputs
- 4 prerecorded alarm messages – 1 for each alarm input
- 15 SMS alarm and service messages
- Memory stores up to 10 different telephone numbers and additional 2 numbers for the CMS
- Listen-in function
- PC programming by USB port
- Download programming by SMS
- Outputs remotely controlled by SMS, CLIP and DTMF cmd
- 80 Caller ID remote & access control users
- Up to 1000 event log buffer

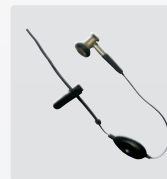
Technical Specification

Power Supply	13,8 - 14,5V DC
Battery backup (optional)	12V/1,2Ah
Current consumption - peak	2A
Current consumption - transmitting mode	250mA
Current consumption - idle mode	90mA
Tri band GSM module (QUAD optional)	900/1800/1900 MHz
PCB dimensions	105 × 80 mm
Unit dimensions	118 × 170 × 60 mm
Unit dimensions - IP56 box	155 × 220 × 82 mm
Antenna SMA	1
Weight (without battery)	550g

Accessories



POWER SUPPLY
BACKUP BATT BOX



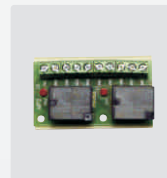
Head phone



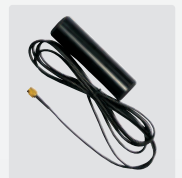
External antenna
(cabel lenght 3 m)



USB key
SIM read/write

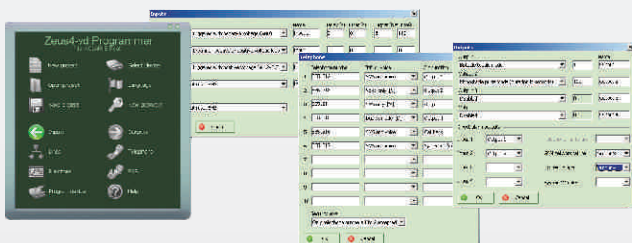


Relay board



Outdoor GSM
antivandal antenna

Programming PC Software



Distributor