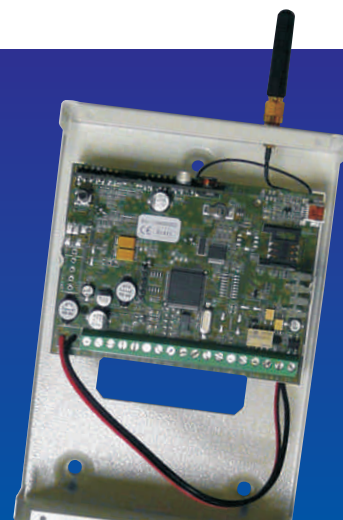


ZEUS4-MC

GSM alarm communication control system

ZEUS4-MC is a sophisticated GSM alarm communication control system that is designed to ensure low-cost, high-speed and reliable alarm communications. It can be used as a backup for standard PSTN telephone line in the event of failure or as a replacement for standard telephone line when it is not possible to set it up. ZEUS4-MC acts as normal PSTN telephone line when communicating with Central Monitoring Station through Contact ID or SIA protocol, but it uses GSM network.

ZEUS4-MC has 4 output trouble indications and 4 alarm inputs. Each alarm input, when alarm is triggered, sends a contact ID event, alarm beep and SMS messages separately or all at the same time to up to 10 different telephone numbers and 2 Central Monitoring Stations for Contact ID protocol. ZEUS4-MC also gives an end-user the ability to control certain systems from distance by SMS or Caller ID (CLIP) command.



Applications

- Backup for standard PSTN telephone line
- Standalone telecommunication unit (instead of PSTN line)
- Money save in offices: GSM to GSM calls from desk phone (FCT – Fixed Cellular Terminal)
- Alarm panels with built-in digital communicator
- Automatic voice and digital telephone dialers
- Standard telephone sets
- PABX – private telephone branch exchanges

Features

- Built-in 3 or 4 band GSM module
- Full transparent event reporting through Contact ID protocol
- Contact ID protocol built-in
- Standard telephone line backup
- 4 alarm inputs, 4 remotely controlled trouble status outputs
- GSM Priority input
- ON/OFF input
- 15 SMS alarm and service messages
- Memory stores up to 10 different telephone numbers and 2 numbers for the CMS
- PC programming by USB port
- Download programming by SMS
- 80 Caller ID remote & access control users
- Up to 1000 event log buffer

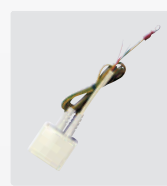
Technical Specification

Power Supply	13,8 - 14,5V DC
Battery backup (optional)	12V/1,2Ah
Current consumption - peak	2A
Current consumption - transmitting mode	250mA
Current consumption - idle mode	90mA
Tri band GSM module (QUAD optional)	900/1800/1900 MHz
PCB dimensions	105 × 80 mm
Unit dimensions	118 × 170 × 60 mm
Unit dimensions - IP56 box	155 × 220 × 82 mm
Antenna SMA	1
Weight (without battery)	550g

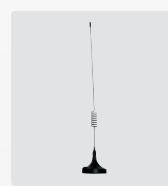
Accessories



POWER SUPPLY
BACKUP BATT BOX



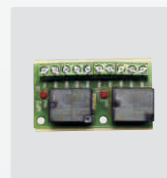
Tel. line overvoltage
protection



External antenna
(cabel lenght 3 m)



USB key
SIM read/write

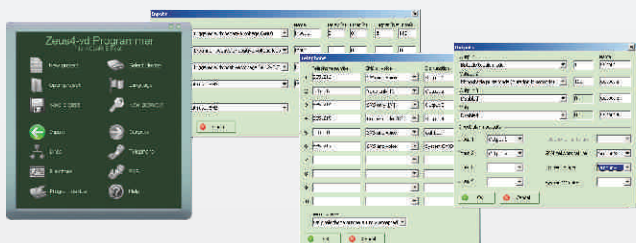


Relay board



Outdoor GSM
antivandal antenna

Programming PC Software



Distributor