

ZEUS4-DE

GSM alarm communication control system

ZUES4-DE is one of the most recent innovative technologies that allow the use of GSM mobile phone solution in which the door phone unit dials a preprogrammed number silently, for instance your office, department, home or mobile telephone number. You can then answer the call as normally and chat with the visitor and then type in your unique unlock code via your telephone keypad to let them in.

ZEUS4-DE is a completely wireless solution for your doors, barriers, gates, unmanned stations or door entry systems. You can also use your mobile phone to remotely control your heating system, air conditioning and more.



Features

- Door phone-to-GSM speech communication
- 5 push button inputs up to 10 numbers each
- Access control with CLIP, DTMF & SMS command
- Units remote control (heating, air conditions, etc.)
- Send alarm prerecorded messages and SMS to user's GSM phone
- Low-cost wireless access system easy to set up on any entrance
- No cost access control
- Activate up to 5 entrance or devices individually by mobile or landline phone
- Receive SMS alert when an incident occurs at you property

Door entry panels



EVM-VX4000 enables calling and voice communication between visitor and end-user. Door entry unit can be surface or flush mounted. It is available with 1, 2 or 4 call buttons..



EVM-KC enables calling and voice communication between visitor and end-user. It is a simple single button door entry panel.



EVM-BX is used to modify already built Intercoms and make them compatible with ZEUS4-DE GSM door phone entry unit. Users still keep current design and look of existing Intercom, but it is adapted to ZEUS4-DE unit.

Technical Specification

Power Supply	13,8 - 14,5V DC
Battery backup (optional)	12V/1,2Ah
Current consumption - peak	2A
Current consumption - transmitting mode	250mA
Current consumption - idle mode	40mA
Tri band GSM module (QUAD optional)	900/1800/1900 MHz
PCB dimensions	105 × 80 mm
Unit dimensions - IP65 box	150 × 220 × 80 mm
Antenna SMA	1
Weight (without battery)	550g

Accessories



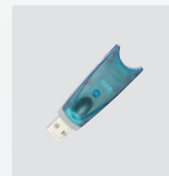
POWER SUPPLY
BACKUP BATT BOX



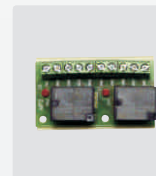
Ext. power supply
230V AC/14,6V DC



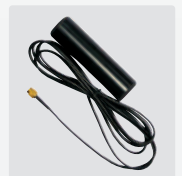
External antenna
(cabel lenght 3 m)



USB key
SIM read/write

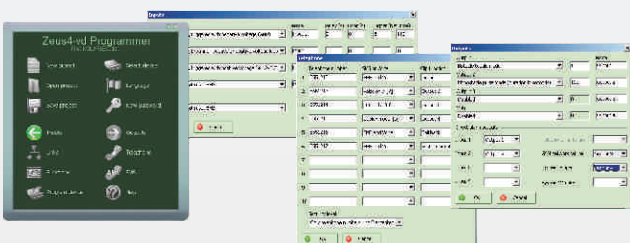


Relay board



Outdoor GSM
antivandal antenna

Programming PC Software



Distributor