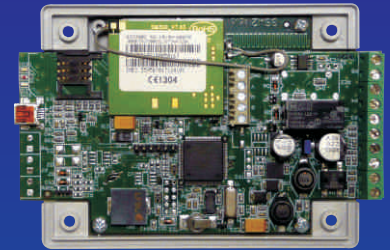


GSW2 gate controller is a GSM communication device that can be programmed with up to 200 phone numbers for wireless security applications and switching remote equipments and systems. When an authorized user calls the nominated phone number of the GSW2 unit the system will recognize his ID number (phone number) and open the gate. The unit allows an end-user to add and delete users from the system individually.



GSW2 is ideal for a wide range of security applications that can operate gates, barriers, shutters, garage doors and entry doors remotely and securely using the caller ID from a mobile or land line phone without any call costs. It is suitable for residences, condominiums, hospitals, hotels, and factories.

Callers from a mobile or land line, you or your family, employees and visitors can access your property at any time reducing risks while waiting at gates as they open.

Features

- Event log – find out who accessed the property by phone and when
- Set up all features using an unique and simple SMS prompt system
- Up to 200 authorized users can open the entrance with a free call
- Unique future proof connectivity and integration features: RS 485, USB, web programming,
- Wiegand 26 output and many other flexible features

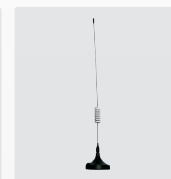
Technical Specification

Power Supply	12 - 24 AC/DC
Current consumption - peak	2A
Current consumption - transmitting mode	320mA
Current consumption - idle mode	40mA
Tri band GSM module (QUAD optional)	900/1800/1900 MHz
PCB dimensions	105 × 80 mm
Unit dimensions	110 × 85 × 35 mm
Antenna SMA	1
Weight (without battery)	280g

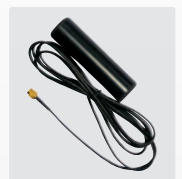
Accessories



Door Phone



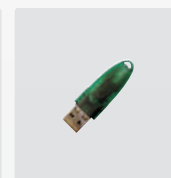
External antenna
(cabel lenght 3 m)



Outdoor GSM
antivandal antenna

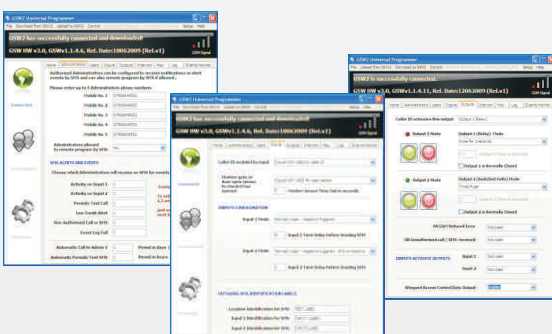


USB key
SIM read/write



USB key
Software License

Programming PC Software



Distributor