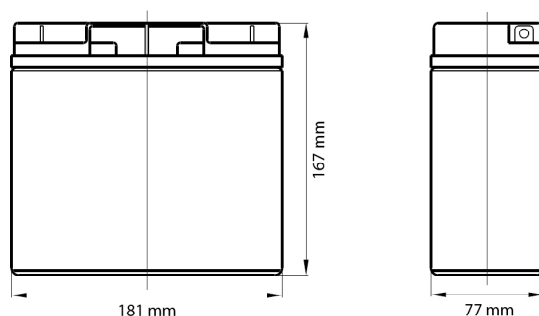
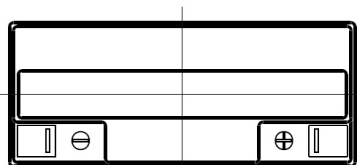
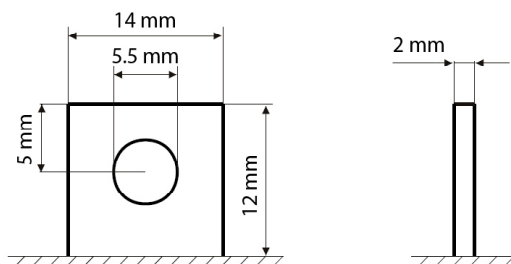


## • Terminal Type

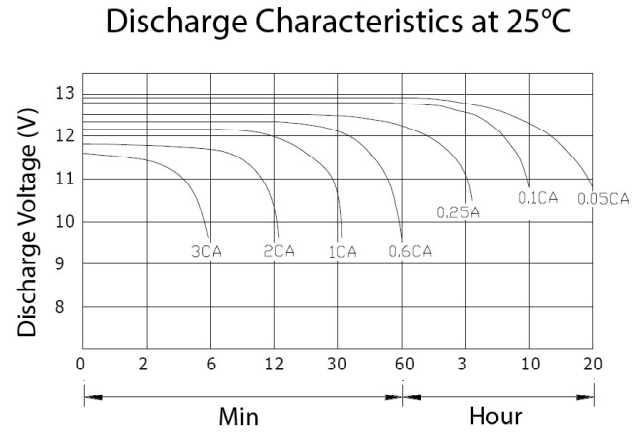
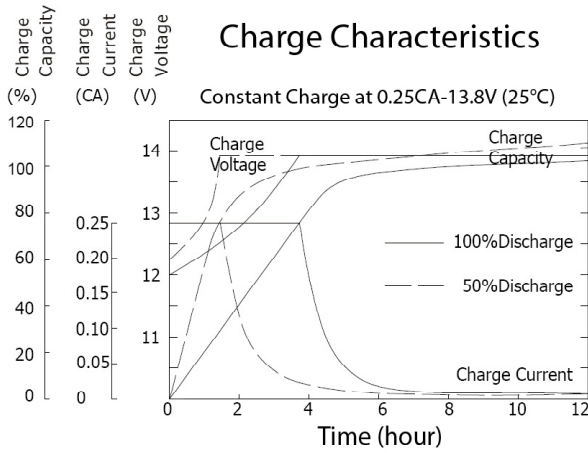


## • Specifications

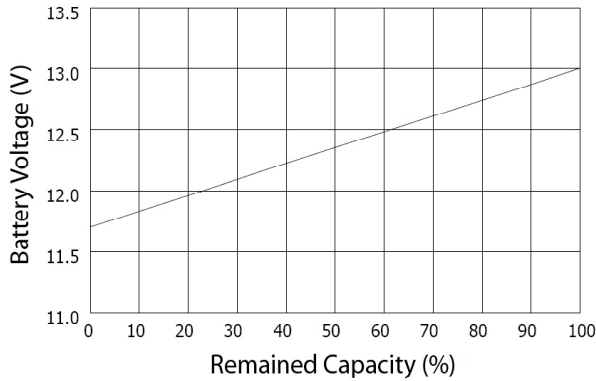
Battery Model	UL 18-12			
Designed Floating Life	5 Years			
Capacity (25°C)	20HR (0.9A, 1.75V)	10HR (1.71A, 1.75V)	5HR (3.06A, 1.75V)	1HR (10.8A, 1.75V)
	18.0 AH	17.1 AH	15.3 AH	10.8 AH
Dimensions	Length	Width	Height	Total Height
	181 mm	77 mm	167 mm	167 mm
Approximate Weight	6.40 kg			
Internal Resistance	Fully charged at 25°C: 0.016 Ohm			
Self Discharge	3% of capacity declined per month at 25°C			
Capacity Affected by Temperature (20HR)	40°C	25°C	0°C	-15°C
	102%	100%	85%	65%
Charge Voltage (25°C)	Cycle use		Float use	
	14.4-14.8V (-30mV/°C), max. Current: 5.4A		13.6-13.8 (-20mV/°C)	

## • Construction

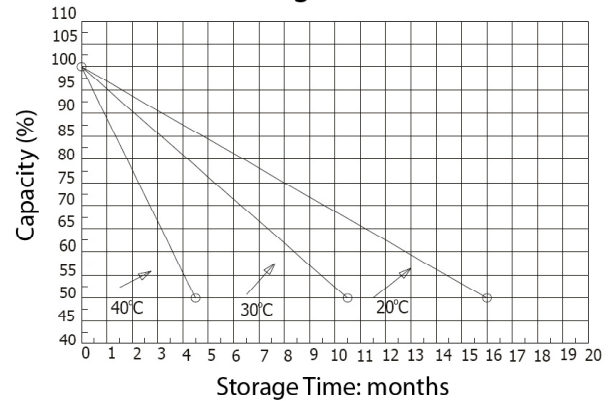
- |             |                |                |                  |
|-------------|----------------|----------------|------------------|
| ■ Component | - Raw material | ■ Sealant      | - Epoxy Resin    |
| ■ Positive  | - Lead dioxide | ■ Safety valve | - EPDR           |
| ■ Negative  | - Lead         | ■ Terminal     | - Copper         |
| ■ Container | - ABS          | ■ Separator    | - Fibre glass    |
| ■ Cover     | - ABS          | ■ Electrolyte  | - Sulphuric acid |
- ABS containers and covers - Flame Retardant optional
  - Sealed and maintenance free option
  - Non-spillable construction design



### Relationship of OCV and the state of charge



### Self Discharge Characteristics



- **Constant Current discharge ratings - amperes at 25°C**

F.V / Time	5 MIN	10 MIN	15 MIN	30 MIN	1 HR	3 HR	5 HR	10 HR	20 HR
1.60 V	70.9	43.6	33.0	20.1	10.9	5.62	3.31	1.84	1.01
1.67 V	65.9	41.8	32.0	19.3	10.7	4.75	3.24	1.80	0.97
1.70 V	60.8	40.0	31.0	17.5	10.3	4.52	3.17	1.76	0.95
1.75 V	60.1	38.9	30.0	16.7	10.1	4.39	3.08	1.73	0.94
1.80 V	53.3	37.0	27.3	15.4	9.40	4.28	3.02	1.72	0.92
1.85 V	47.2	35.2	24.4	14.1	9.11	4.21	3.00	1.33	0.92

- **Constant Power discharge ratings - watts at 25°C**

F.V / Time	5 MIN	10 MIN	15 MIN	30 MIN	1 HR	3 HR	5 HR	10 HR	20 HR
1.60 V	144.0	93.6	72.0	41.8	23.4	9.11	6.19	3.49	1.84
1.67 V	139.3	91.4	71.0	41.0	23.1	9.07	6.17	3.48	1.84
1.70 V	133.6	90.0	69.1	40.3	22.9	9.00	6.15	3.46	1.81
1.75 V	125.6	86.4	67.0	39.2	22.5	8.93	6.12	3.46	1.81
1.80 V	109.1	80.0	64.1	38.2	21.8	8.75	6.09	3.38	1.77
1.85 V	103.0	74.2	61.2	36.4	21.3	8.60	5.98	3.38	1.77