



The Benefits of Intelligence 2



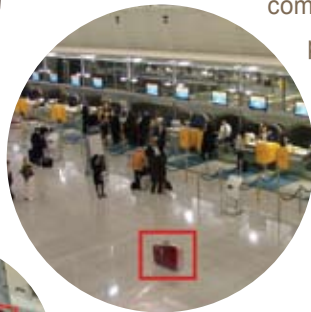


On-Board Intelligence



A revolution is under way in the IP-based surveillance equipment market, and Intellio is on the front line. Until now, surveillance systems stored video footage and users played it back to watch, helpless, as a crime is committed. Today, the Intellio System **recognizes security events and alerts the user to take immediate action to stop the crime.** Intellio has developed a revolutionary hardware and software combination that has become an essential tool for proactive event detection and management.

IOB



Not only is the Intellio intelligent camera system proactive, it's also more effective. Human fallibility means that an operator watching 16 cameras will miss 95% of all critical events after just 1 hour. An Intellio system can **efficiently detect all critical events, 24 hours a day, across a network of cameras much larger than a mere 16 cameras.**

IOB



Intellio also offers a technological leap forward. The Intellio System allows event recognition and analysis to be handled within the cameras themselves, reducing the burden on servers. This **enables just one server to handle as many as 128 cameras, and therefore, one Intellio system can handle thousands of cameras.** Such a drastic reduction in the number of servers slashes maintenance and operation costs, making the Intellio system a very cost-efficient solution.

IOB

EVENT DETECTION

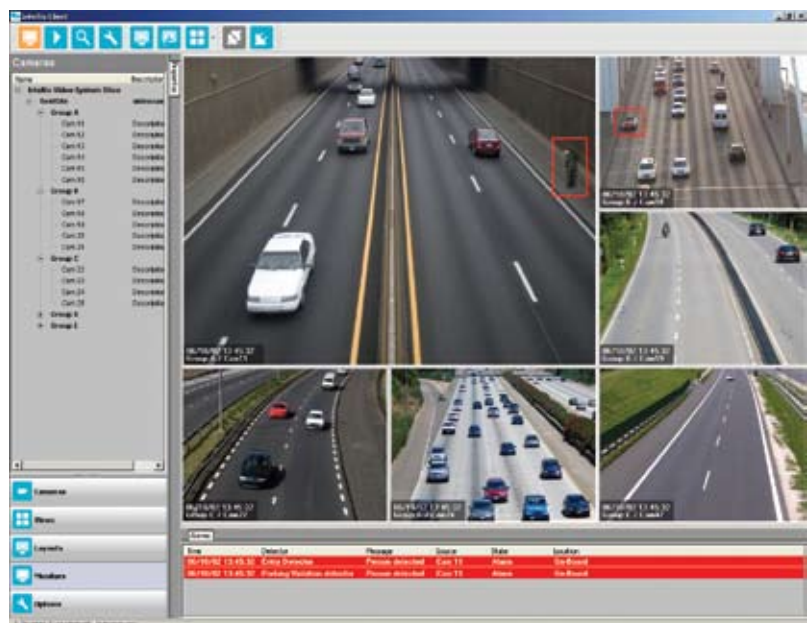
Intellio's intelligent cameras are embedded with a vast range of detectors to identify critical events in progress and immediately alert operators.

Sabotage Protection

- **Turning and Covering** – detects disabling or obstruction of the camera

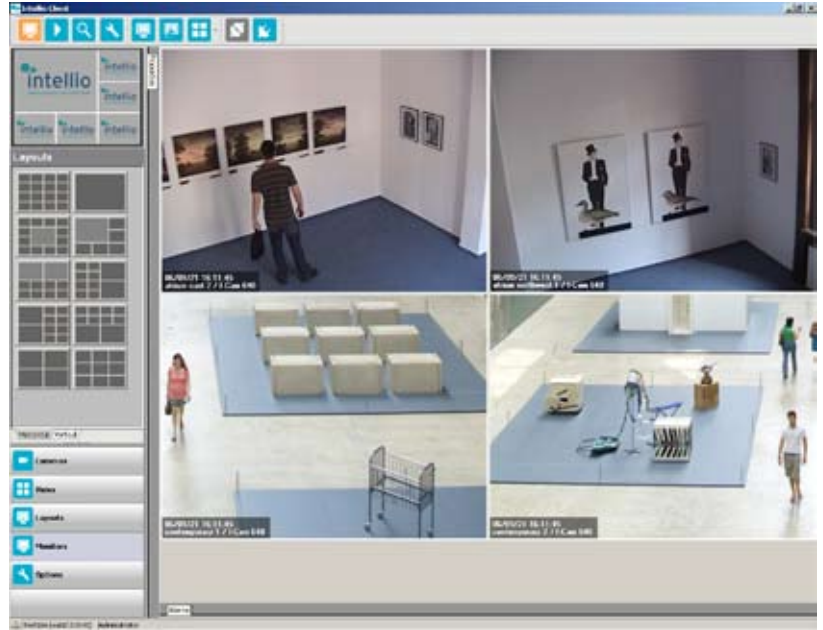
Traffic monitoring

- **traffic flow violation** – detects traffic traveling opposite the permitted traffic flow





- **parking violation** – detects parked cars in unauthorized areas
- **speed detection** – detects and records the speed of each car passing the camera
- **license plate recognition** – recognizes and stores license plates with the help of Adoptive Recognition, Hungary's world renowned license plate recognition module
- **obstacle detection** – detects objects or obstacles limiting, disrupting or blocking traffic flows
- **vehicle counting** – Counts the number of vehicles passing within the camera's field of view. It is able to differentiate between different object sizes, counting each category separately.

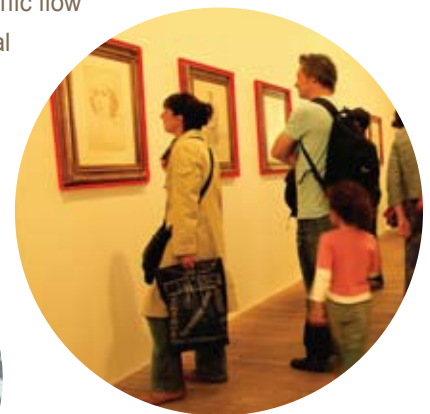


Human behavior monitoring

- **crowd detection** – detects the formation of crowds which can be an indication of a security risk
- **restricted zone protection** – detects people or objects entering restricted areas
- **traffic flow violation** – detects people moving opposite predefined traffic flow
- **running person detection** – detects people moving faster than normal human traffic flow
- **people counting** – counts people passing within the field of view of the camera. It is able to differentiate people traveling in different directions, and count based on this.

Object monitoring

- **abandoned object detection** – detects objects which have been left unattended
- **stolen object detection** – detects the removal of an object which has been put under protection of the camera.





Intellio Software

Intellio not only provides intelligent cameras – **it has also developed software responsible for configuration, management and monitoring to complement the intelligence of the cameras.**

Together, they provide a highly advanced video surveillance system.

IOB

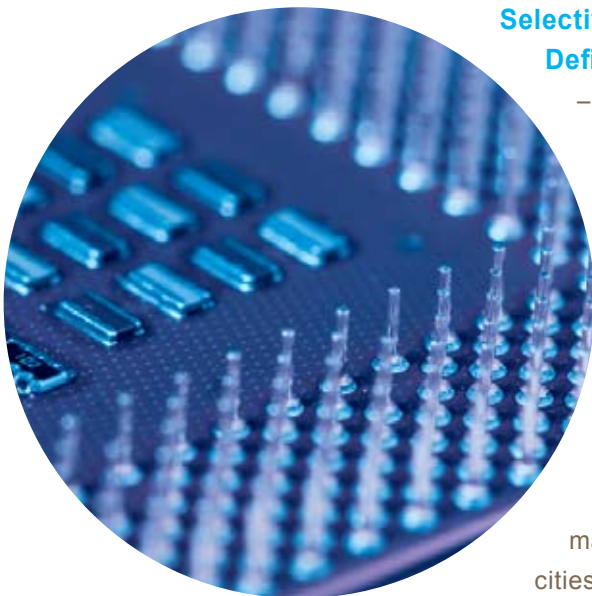
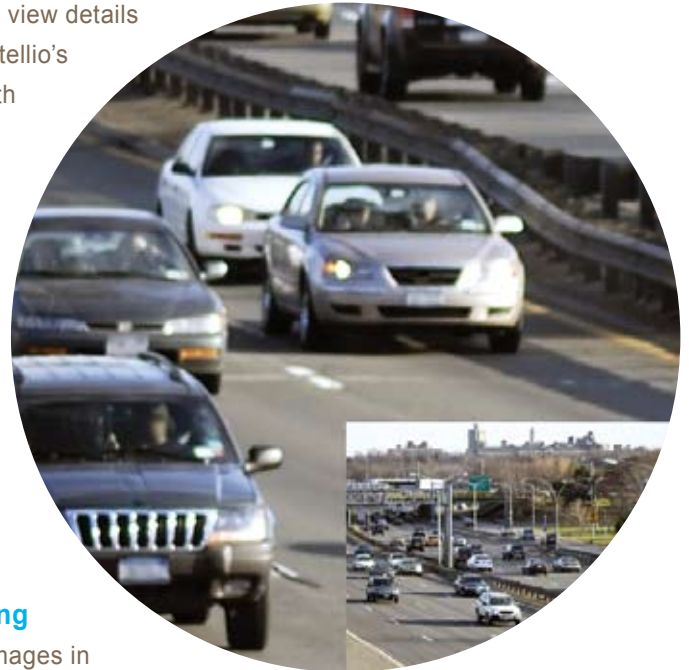
Time	Detector	Message	Source	State	Location
2006.10.02.20:11:09	Disappear detector	Object removed	Cam 11	Alarm	On-Board
2006.10.02.20:02:48	Appear detector	Object placed	Cam 13	Alarm	On-Board
2006.10.02.18:54:12	Appear detector	Object placed	Cam 13	Alarm	On-Board
2006.10.02.17:32:35	Appear detector	Object placed	Cam 13	Alarm	On-Board
2006.10.02.14:42:44	Disappear detector	Object placed	Cam 11	Alarm	On-Board

Event Handling – The Intellio software allows images captured by the Intellio cameras to be viewed in custom layouts on a large number of monitors (monitor wall support). Alerts are displayed in a window so they don't obstruct the view of the user. Both visual and audio cues alert the user to an event (security breach).

Event Playback – The Intellio software provides a separate interface for replaying images. Users can search the images based on past alarms and events, drastically reducing the time required to find and review stored images. All images are synchronized in time and the timeline interface can be fully customized to display only the relevant images to the user.



IntelliZoom – Intellio’s newest cameras allow users to view details that can mean the difference between life and death. Intellio’s IntelliZoom technology effectively reduces the bandwidth required to transmit high-resolution images. IntelliZoom also solves the problem in which monitoring stations scale down images to fit many footages on each monitor, making it difficult to detect events and follow detail. IntelliZoom software automatically enlarges the parts of the images which have movement in them to their maximum resolution, enabling the user to see the details, while static areas are neglected as they are less important in terms of security.



Selective High Definition Imaging

– By selecting images in motion, IntelliZoom offers a revolutionary way to optimize bandwidth in its intelligent cameras. Selective HD Imaging makes scaled-down images show the relevant details in full resolution, while keeping the static parts of the image at low resolution.

Site / Domain – Intellio’s software enables the user to create virtual servers- **Sites**. When there is more than one server, the system creates a Site which acts as one large virtual server, sharing resources and optimizing performance. When there are many Sites within a network (e.g.: warehouses in many different cities), the Intellio System enables the user to organize them in a hierarchical structure, or **Domain**, which integrates the security and user management roles within the whole system.

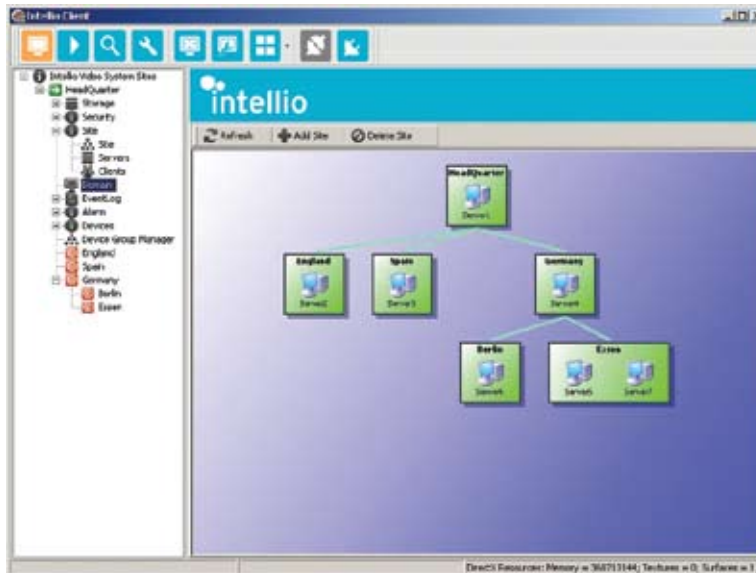
Intellio Essential	Entry level software package, maximum 1 server	Low startup cost, intelligent system, easy to install and manage
Intellio Enhanced	Extended functionality, 1 Site capability (multiple servers)	Easy upgrade, advanced scaling options, greater control
Intellio Superior	Full functionality, 1 Domain capability (multiple Sites)	Maximum scaling potential



System Architecture

The combination of Intellio's intelligent cameras and its software makes the Intellio System a powerful surveillance tool on a large scale. Intellio's system, **specifically designed for medium to large installations, carries intelligence within itself – Intelligence On Board – allowing it to adapt to situations and modify its operation.**

IOB



DOMAIN

The Intellio System's **Domains** allow the operators to configure and monitor cameras without the need to identify the server to which a particular camera is assigned.

Domains **drastically reduce the time and energy spent on the maintenance, configuration and operation of the system.**

IOB

Through Intellio's software, users go through a single login process allowing them to see just as much as they are permitted. A fully authorized user (administrator) will see all the servers and cameras within the domain without further logins.

DYNAMIC LOAD DISTRIBUTION

The Intellio System gives a network maximum performance and maximum stability. If cameras monitoring outdoor areas, for example, are receiving much more information than those monitoring office corridors, Intellio's Dynamic Load Distribution automatically reallocates cameras in heavy use to servers with extra processor or storage capacity, balancing overall server use.

INTELLIO AUTO REROUTE

The Intellio System ensures that a camera is always recording, a feature essential to security. While most of today's cameras will not record once the server behind it goes offline, Intellio's technology ensures that **all footage will be stored as long as at least one server is operational** within a Site.

In the Intellio System, if one (or more) servers go offline for any reason, it no longer presents a security risk during the malfunction. In the Intellio System, once a server is recognized as offline, the cameras related to the malfunctioning server will be redistributed among the other servers, even if the other servers are working at full capacity, by lowering the frame rates of the cameras. This feature ensures **constant recording and event detection within all cameras of the network.**

IOB

IOB



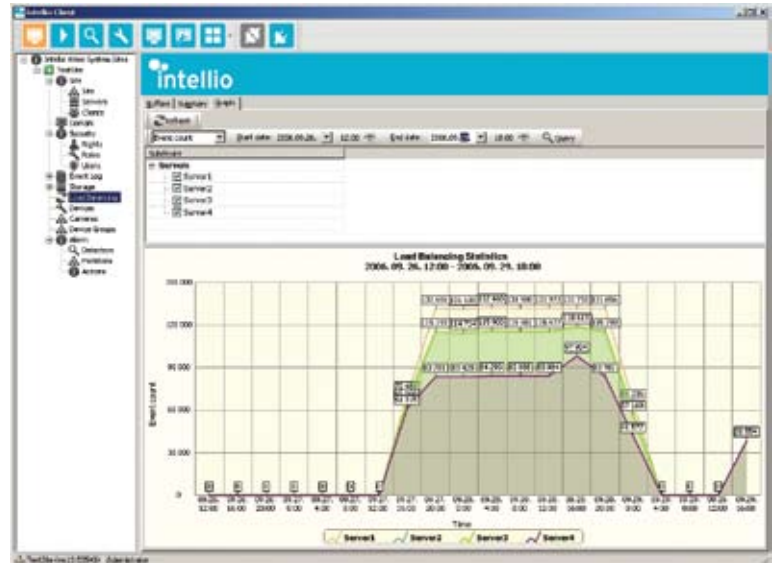
CENTRALIZED RIGHTS MANAGEMENT

The Intellio System is equipped with **highly advanced authentication and rights management which ensures that only authorized users access the images.**

IOB

This management combines simplicity with accessibility.

In the Intellio System, each user is issued a unique user name and password, and is assigned a certain role, which enables or prohibits them from accessing or altering certain parts of the network. In an office building, for example, the facility management company will be able to access the cameras monitoring the utilities rooms and access corridors, the security detail will see the hallways, staircases and entrances, while the head of security will have access to all cameras within the network. With the single login authentication of Intellio system, once a user is logged in, they will be able to view all cameras according to their role regardless of the server, without having to sign in to each server.



INTELLIO ENCRYPTION

The Intellio Encryption module fulfills even the highest security requirements with its 1024-bit asymmetric encryption standard. This level of security is used in all channels of communication from the cameras to the servers and even to the client computers. **This guarantees that no one will be able to access and modify the images.** During connection, each camera is identified by the system individually, making it impossible to maliciously switch cameras or replay previously recorded images to hide malicious intent.

IOB

The Intellio System stores the files using the operating system's highest security standards: files cannot be accessed by outsiders.

IOB

Intelligence On Board = IOB



RoHS
COMPLIANT



Your partner: